



Office Space Available

FOR LEASE

2000 Oak Street • Bakersfield, CA



Property Highlights

- Convenient downtown location with easy access to Highway 99 and Westside Parkway
- Prominent monument signage available on Oak Street and 21st Street
- Upgraded interior improvements throughout
- New elevator installed 2017

BolthouseSM
LAND COMPANY

Mark J. Smith, SIOR • Principal • 661 616 3561 • marks@asuassociates.com • CA RE #00632003

Martin J. Starr • Principal • 661 616 3567 • mjstarr@asuassociates.com • CA RE #01179469

Matthew E. Starr, SIOR, CCIM • Principal • 661 616 3570 • matthew@asuassociates.com • CA RE #01367855

11601 Bolthouse Drive Suite 110 • Bakersfield, CA 93311 • 661 862 5454 main • 661 862 5444 fax

The information contained herein may have been obtained from sources other than ASU Commercial. We have not verified such information and make no guarantees, warranties or representations about such information. It is your responsibility to independently confirm its accuracy and completeness prior to purchasing/leasing the property.

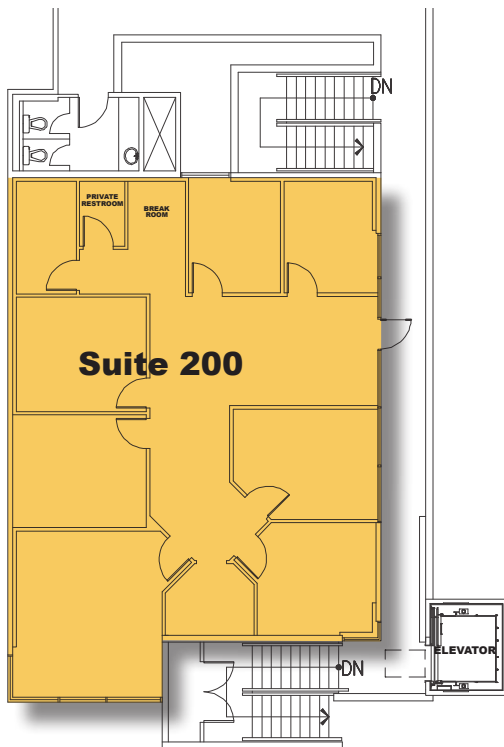
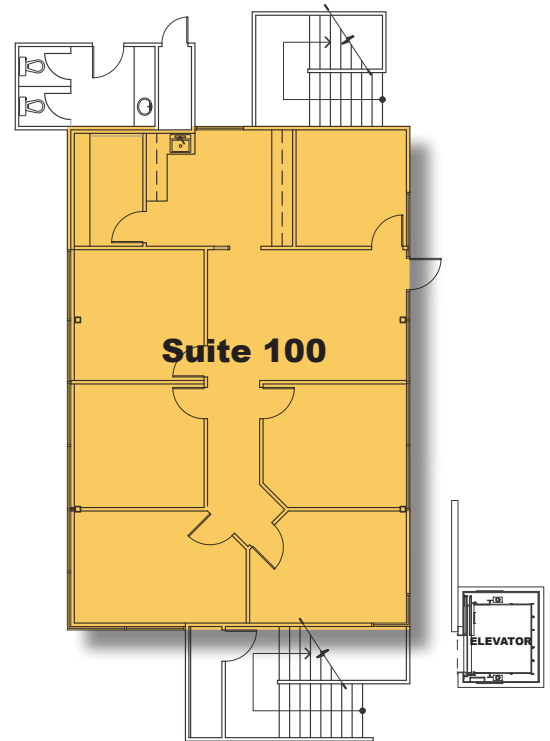
Office Space ■ Available For Lease

2000 Oak Street ■ Bakersfield, CA

First Floor Plan

Available Spaces

- Suite 100: 1,649 SF
- Suite 200: 1,891 SF
- Rental Rate: \$1.60 per RSF Modified Gross, excluding utilities and janitorial services



**Plans deemed to be accurate, but not guaranteed. Plan not to scale.*

Mark J. Smith, SIOR ■ Principal ■ 661 616 3561 ■ marks@asuassociates.com ■ CA RE #00632003

Martin J. Starr ■ Principal ■ 661 616 3567 ■ mjstarr@asuassociates.com ■ CA RE #01179469

Matthew E. Starr, SIOR, CCIM ■ Principal ■ 661 616 3570 ■ matthew@asuassociates.com ■ CA RE #01367855

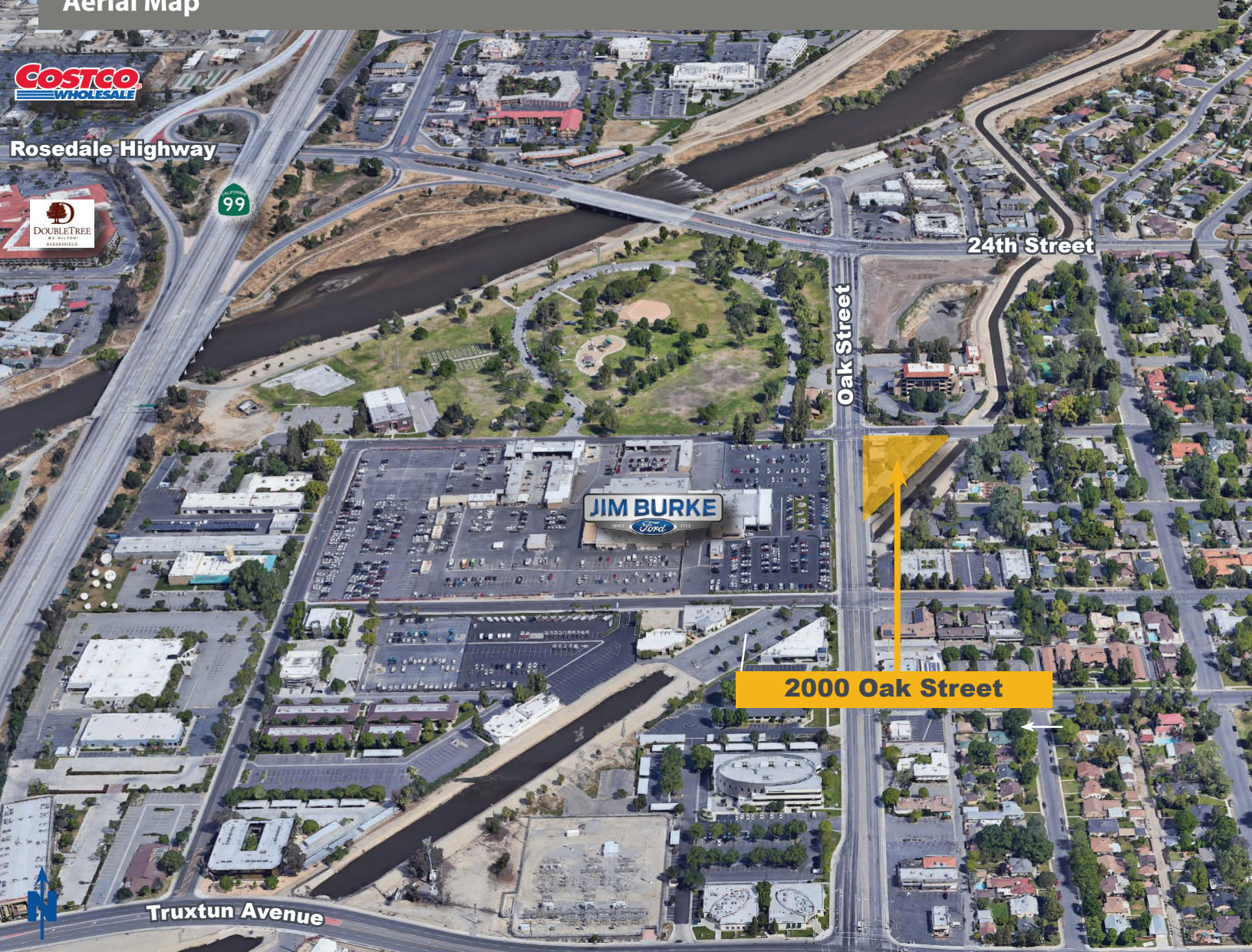
11601 Bolthouse Drive Suite 110 ■ Bakersfield, CA 93311 ■ 661 862 5454 main ■ 661 862 5444 fax



Office Space ■ Available For Lease

2000 Oak Street ■ Bakersfield, CA

Aerial Map



Mark J. Smith, SIOR ■ Principal ■ 661 616 3561 ■ marks@asuassociates.com ■ CA RE #00632003

Martin J. Starr ■ Principal ■ 661 616 3567 ■ mjstarr@asuassociates.com ■ CA RE #01179469

Matthew E. Starr, SIOR, CCIM ■ Principal ■ 661 616 3570 ■ matthew@asuassociates.com ■ CA RE #01367855

11601 Bolthouse Drive Suite 110 ■ Bakersfield, CA 93311 ■ 661 862 5454 main ■ 661 862 5444 fax

